

## DELTA-PROTEKT® VL 420

Article number: 08405487

DELTA-PROTEKT® VL 420 is a topcoat for a zinc flake basecoat or for other metallic substrates. In a system e.g. made of basecoat + topcoat, it is responsible for multifunctional characteristics such as a defined coefficient of friction window, resistance to media, colouring etc. Additionally, it can enhance the corrosion protection properties of the basecoat. The DELTA-PROTEKT® VL 420 is applied via a non-electrolytic application technique directly onto the substrate (part). The zinc flake technique is described in the standards DIN EN ISO 10683 and DIN EN ISO 13858. The application technology can vary according to the dimension and weight of the part; e.g. small parts are usually coated as dip-spin, bigger parts are usually spray coated. All Dörken MKS products have always been free of harmful heavy metals such as chromium VI. As there is no hydrogen involved during the application process, there is no danger of application-related hydrogen-induced stress corrosion cracking.

## CATEGORY



VL-Topcoat

## REQUIREMENTS

### Corrosion resistance

- delays galvanic corrosion
- enhances the corrosion protection of the basecoat

### Special features

- organic
- solvent-based
- gaugeability

### Weathering resistance

- fulfils the requirements of natural outdoor exposure according to DIN EN ISO 12944-2

### Media resistance

- fulfils chemical resistance against operating fluids according to DIN EN ISO 2812

### Resistance against

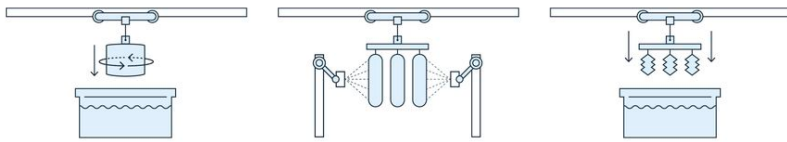
- Corrosion resistance
- Media resistance
- Weathering resistance

### Surface / Substrate

- zinc flake basecoat
- stainless steel
- zinc die cast
- aluminum die cast
- passivated zinc/zinc alloys
- Phosphat
- typical dry film thickness of 4-20 µm
- Even layer construction possible.
- The technical feasibility depends on pretreatment and individual characteristics of each

material.

## Application technology



dip-spin

spray

dip-drain

## Legal conditions

- meets the EU End-of-Life Vehicle Directive 2000/53/EC
- meets the RoHS 2 guidelines (also known as EU Directive on the Restriction of the Use of Certain Hazardous Substances in Electrical and Electronic Equipment 2002/95/EC)
- meets the REACH requirements

## Contact Person

- Thorsten Speck

## SELECTION OF SUITABLE PARTS

### Advised parts



Metrical threaded  
bolts M2-M16

Non metrical  
threaded parts

Nuts

## Suitable parts



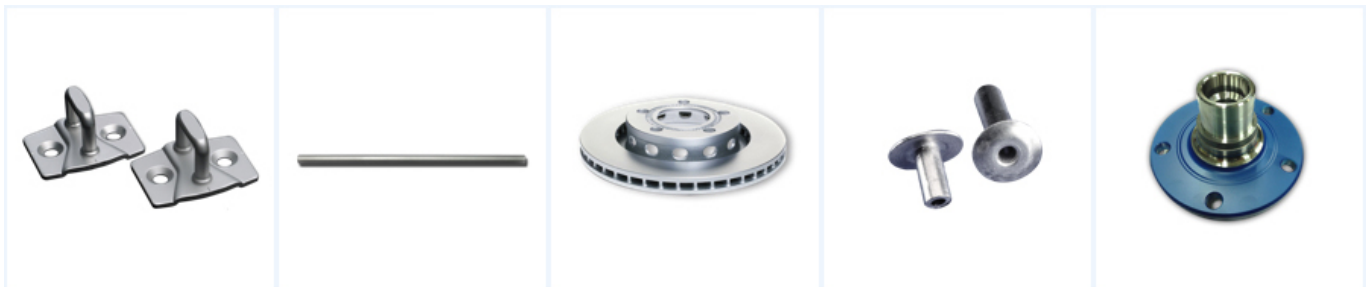
Washers

Big parts

Panels

Metrical threaded  
bolts >M16

Clips



Stamped parts

Pipes and tubes

Brake parts

Rivets

Bearings



Springs

## SPECIFICATIONS

ASTM - F3393